

PARTS LIST		
ITEM	QTY	DESCRIPTION
1	4	1" x 1" x 14GA TUBING X 36"
2	8	1" x 1" x 14GA TUBING X 18"
3	2	1" x 1" x 14GA TUBING X 21"
4	4	1-1/4" x 1-1/4" x 12GA TUBING X 1"
5	4	1/8" FLAT 1" X 1"
6	2	1/8" FLAT SEE PRINT FOR DIMENSIONS
7	1	1/8" FLAT SEE PRINT FOR DIMENSIONS
8	6	1/8" FLAT 1" X 9-5/16"
9	1	1/8" FLAT 17-7/8" X 17-7/8"
10	4	1/8" FLAT 2" X 2"
11	4	1/4" ROUND X 8-1/2"

Updated February 11
 Item number 2 above was
 switched from 16" to 18"

ALL DIMENSIONS IN INCHES
 TOLERANCE +/- 1/16"
 DEBURR ALL PARTS
 PARTS MAY BE MANUALLY
 THERMALLY OR MECHANICALLY CUT
 NO CNC EQUIPMENT MAY BE USED

SKILLSUSA WELDING FABRICATION		
TITLE Firewood Rack		
SCALE	MATERIAL A36 OR SIMILAR	REV: 2020

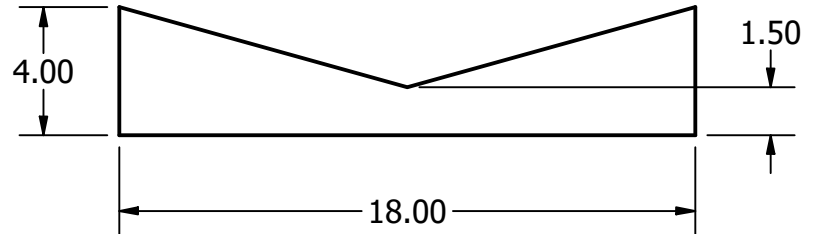
4

3

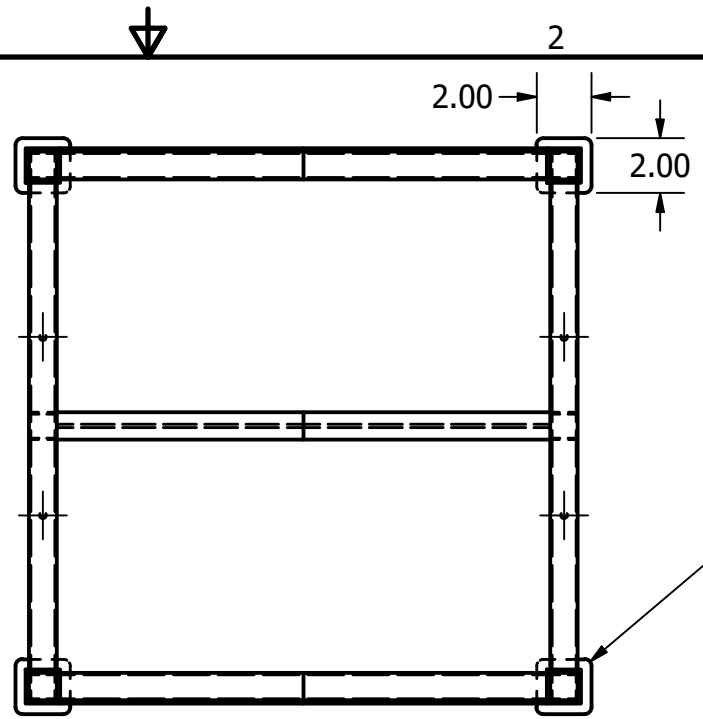
2

1

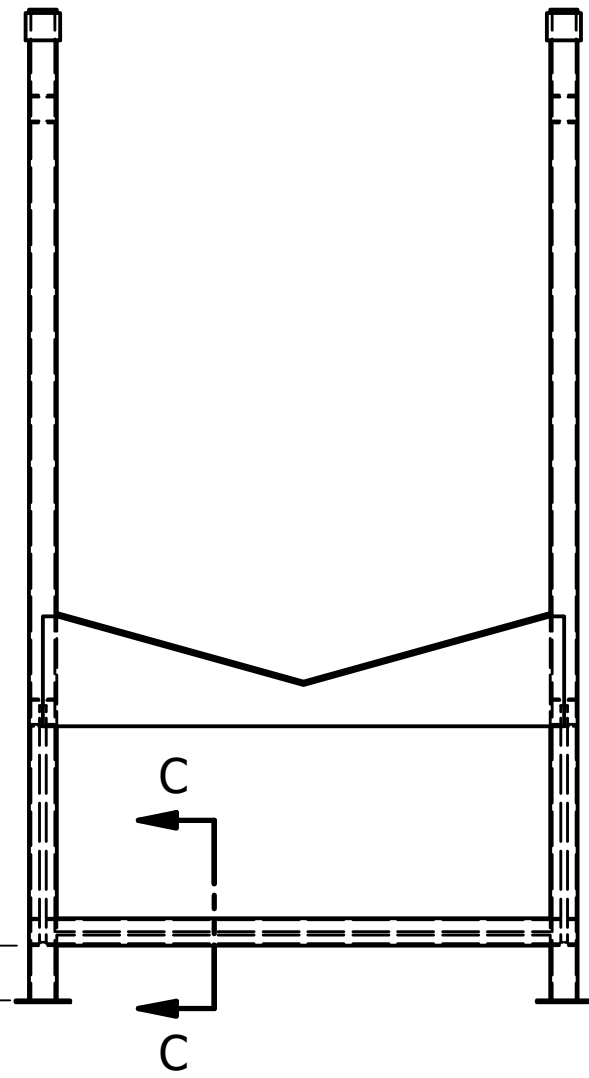
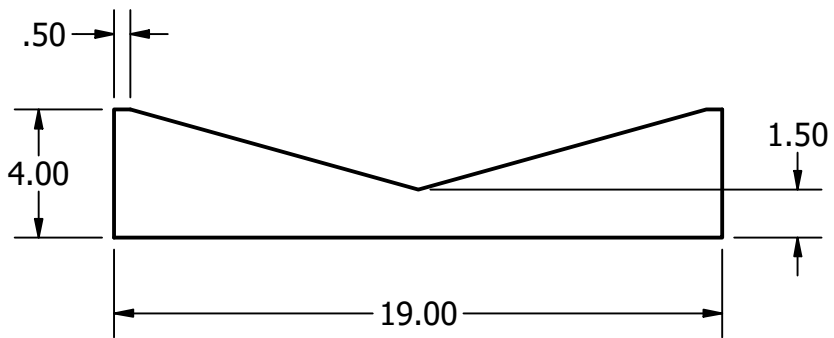
CENTER SUPPORT VERTICAL FLAT



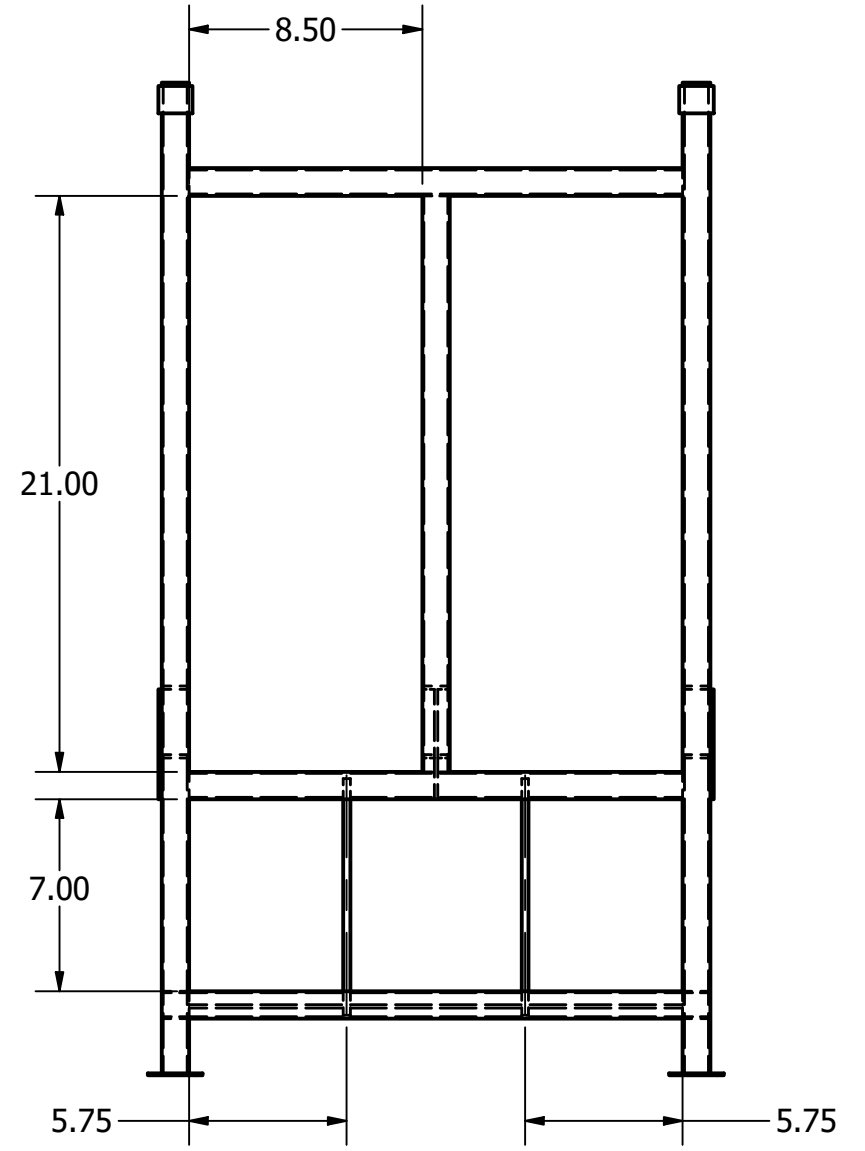
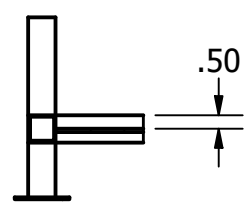
ALL DIMENSIONS IN INCHES
 TOLERANCE +/- 1/16"
 DEBURR ALL PARTS
 PARTS MAY BE MANUALLY
 THERMALLY OR MECHANICALLY CUT
 NO CNC EQUIPMENT MAY BE USED



END SUPPORT VERTICAL FLAT



SECTION C-C



B

B

A

A

4

3

2

1

A

4

3

2

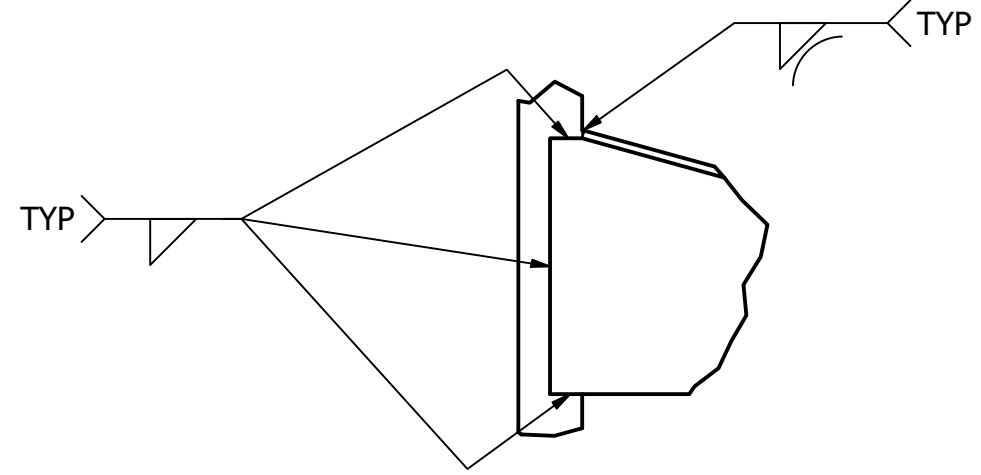
1

WELDS MAY BE MADE IN ANY POSITION WITH ANY PROCESS UNLESS SPECIFIED ON THE PRINT

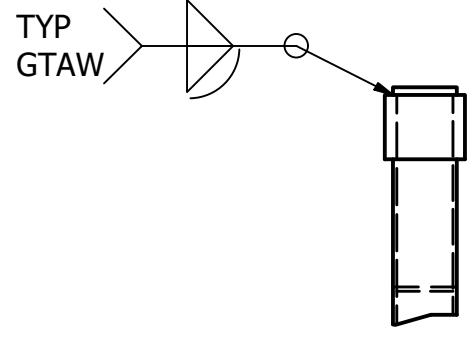
ALL WELDS SHOULD BE CLEANED AND SPATTER REMOVED

ALL TUBING JOINTS SHOULD BE FULLY WELDED ON ALL FOUR SIDES ACCORDING TO TYP WELDING SYMBOLS ON PRINT

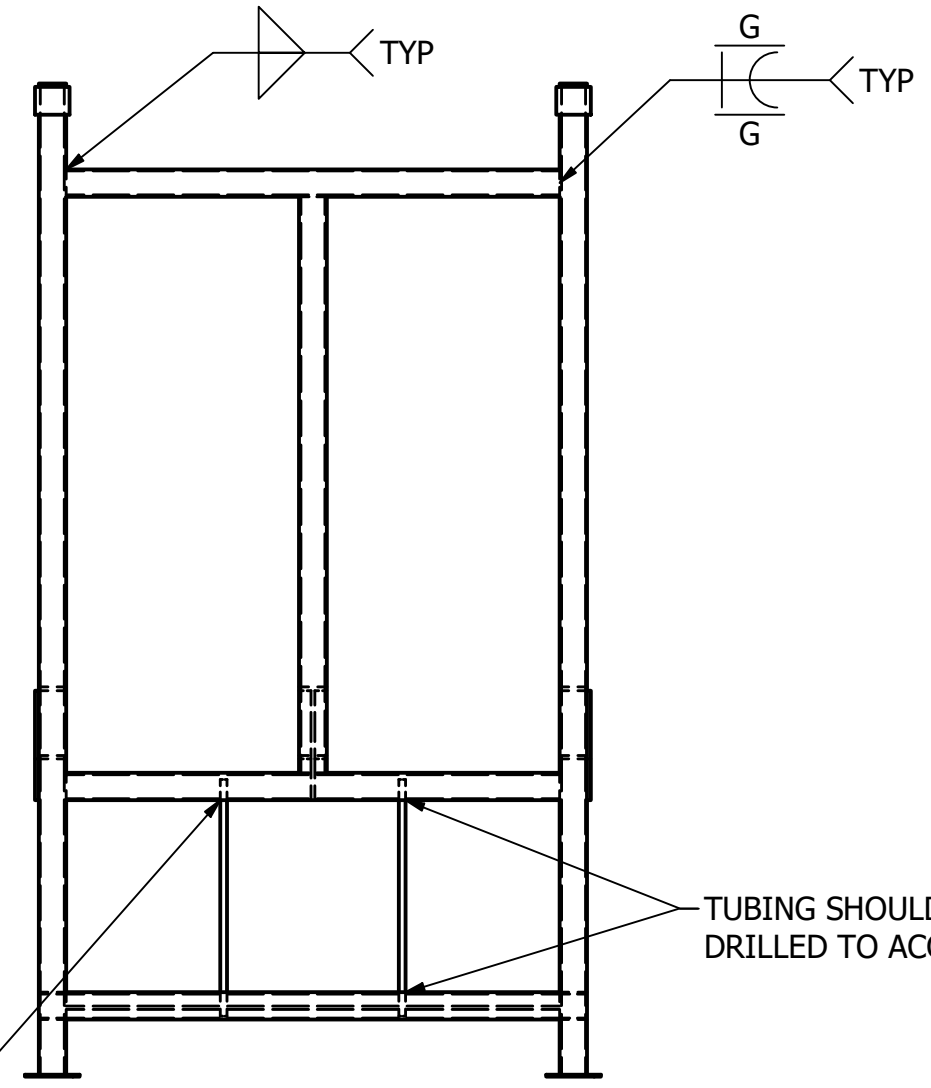
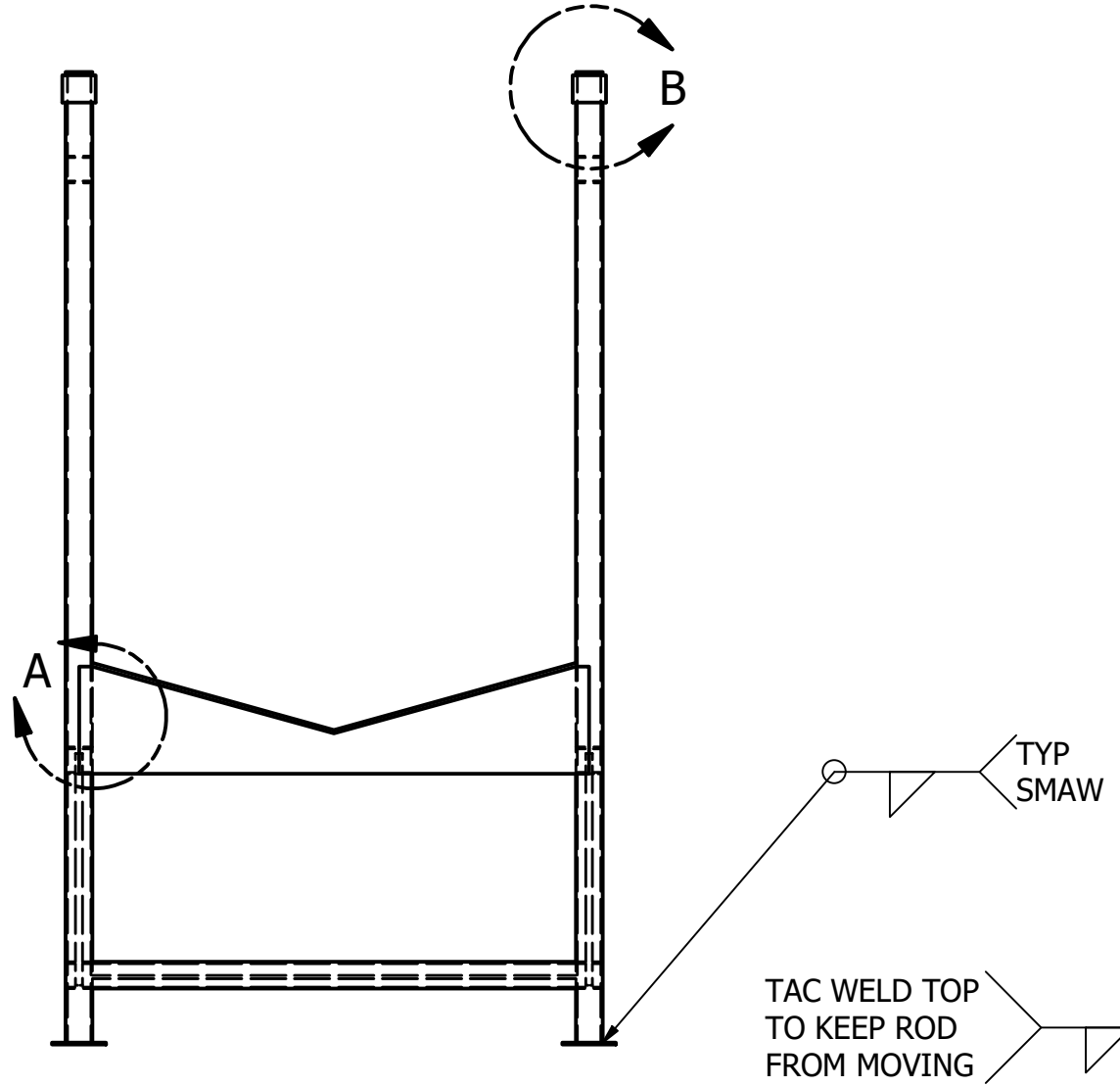
ALL FILLET WELDS HAVE A MINIMUM SIZE OF 1/8"



DETAIL A
SCALE 1/3



DETAIL B
SCALE 1/3



TUBING SHOULD BE
DRILLED TO ACCEPT ROD

4

3

2

1

B

B

A

A

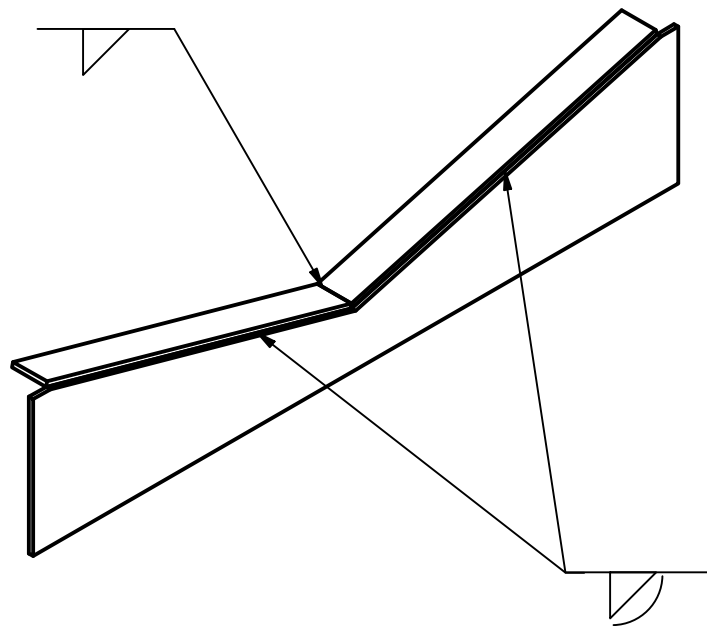
4

3

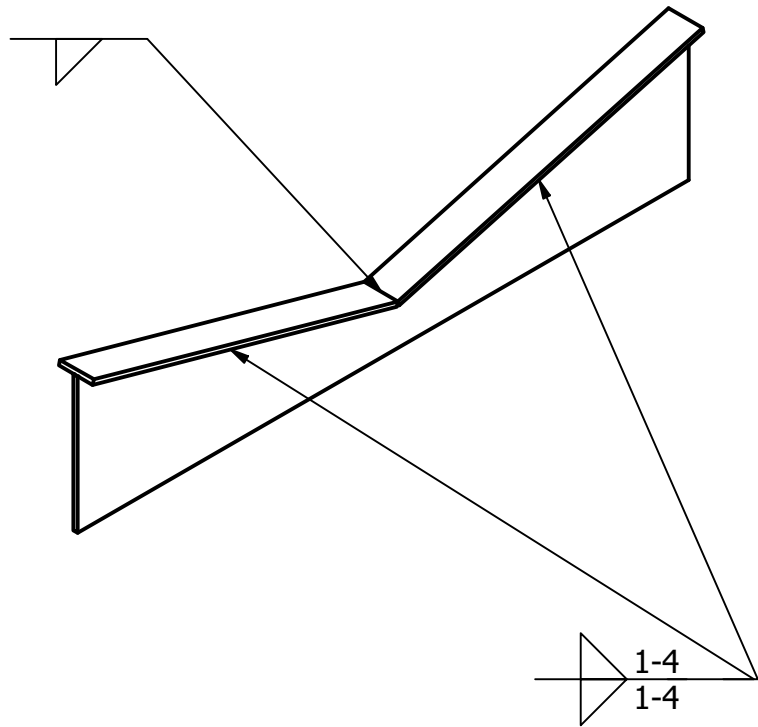
2

1

END SUPPORTS



CENTER SUPPORT



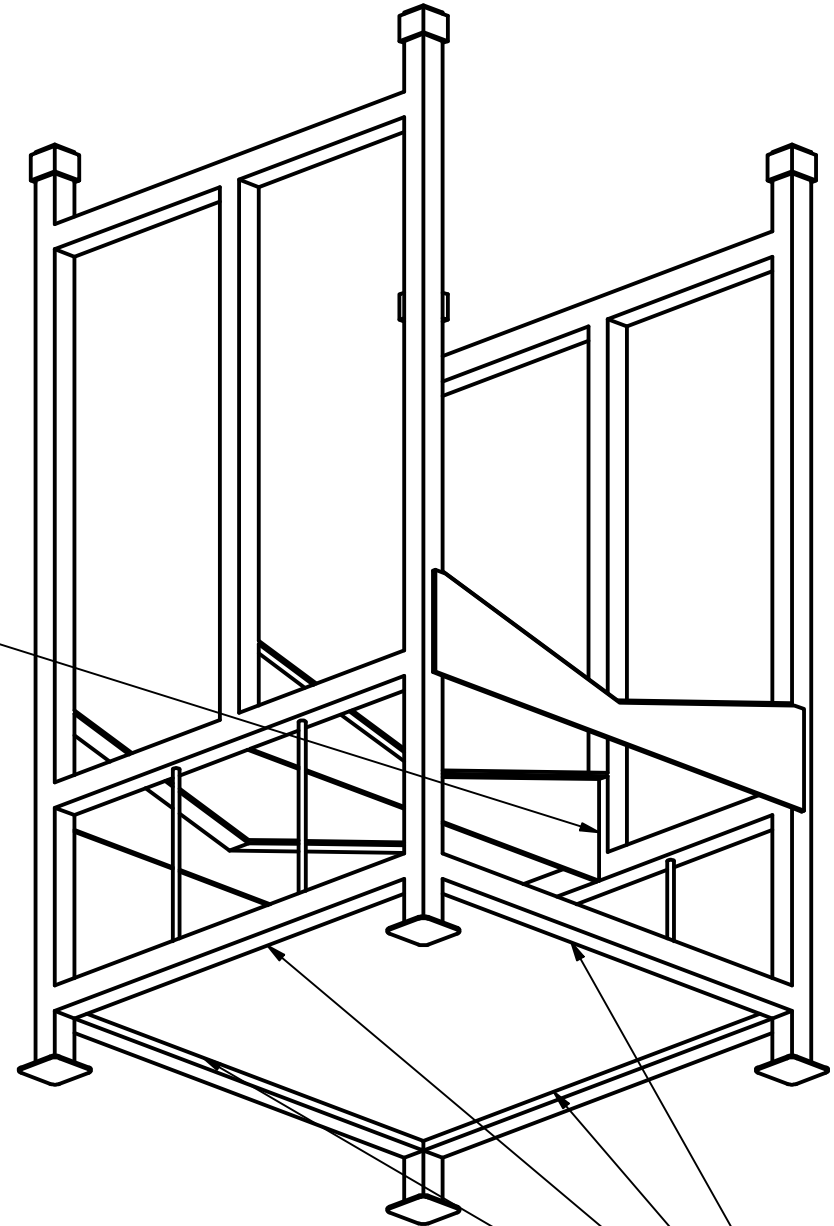
AUXILIARY VIEWS

WELDS MAY BE MADE IN ANY POSITION WITH ANY PROCESS UNLESS SPECIFIED ON THE PRINT

ALL WELDS SHOULD BE CLEANED AND SPATTER REMOVED

ALL FILLET WELDS HAVE A MINIMUM SIZE OF 1/8"

BOTH SIDES OF CENTER SUPPORT ONLY



SMAW

.75 - 3.5

4

3

2

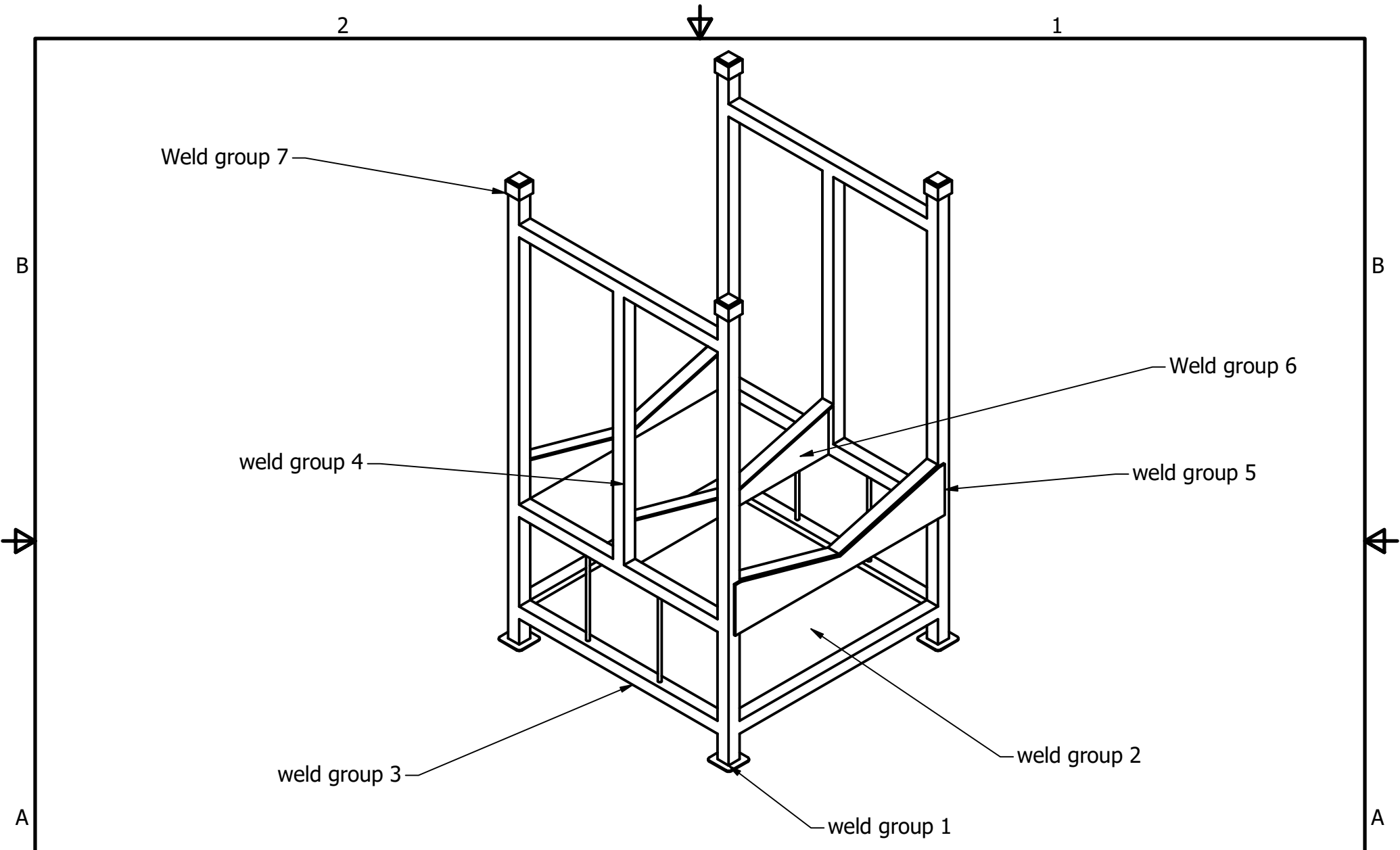
1

B

B

A

A



Weld group 7

weld group 4

weld group 3

weld group 1

weld group 2

Weld group 6

weld group 5

SKILLSUSA WELDING FABRICATION

TITLE

Judges Sheet for Scoring

SCALE

MATERIAL

REV:

2

1

B

B

A

A

2

1